



KINGDOM BUILDERS

ABOVE & BEYOND

WE EXIST TO

**PASSIONATELY CONNECT PEOPLE
TO AN AUTHENTIC LIFE IN CHRIST**

BY RESOUNDING THE MESSAGE, MAKING DISCIPLES AND PLANTING CHURCHES



**REVERB
CHURCH**



PASTOR BRYAN & RENÉE LAMOUREUX

A LETTER FROM THE HEART OF OUR PASTOR

We want to take a moment to express how much the First Coast means to us and how blessed we feel to serve the incredible people of Reverb Church. As we've prayed and prepared for the year ahead, our hearts are full of expectation. The initiatives outlined in this booklet reflect our heart to see Jesus glorified through various people, partnerships, projects, and possibilities. It's an honor to give sacrificially toward this cause.

We're eager to see the impact we can make for God's Kingdom together! Through the Kingdom Builders initiative, you have a unique opportunity to partner with us. In 2025, we are stepping out in faith to see even more accomplished in Jesus' name. We truly believe that lives—both here at home and around the globe—will be changed forever through our collective efforts.

As a couple, we're personally committed to putting our generosity into action, going above and beyond our regular tithes. We believe in the work of Kingdom Builders so we're inviting you to step out in faith with us today as we passionately connect people to an authentic life in Christ.

Our prayer is that God's will would be done here on earth, just as Jesus taught us to pray in Matthew 6:10 (ESV): "Your kingdom come, your will be done, on earth as it is in heaven."

We are so grateful for your faithful generosity, and we look forward to celebrating all that God will accomplish through our united efforts.

We love you,

PASTOR BRYAN & RENÉE



KINGDOM BUILDERS

2025 GOAL
\$1.25M

In the pages of scripture, the concept of “The Kingdom” emerges with resounding prominence. Its recurrence is striking—echoing through the verses repeatedly. Notably, it finds mention more than a hundred times within the New Testament alone. Christ’s teachings are explicit, urging us to shift our focus from mere self-concern to a mind-set deeply rooted in God’s Kingdom principles.

But what does this entail? It’s all too easy to become consumed by our individual aspirations. Yet, time and again, the Bible challenges us to break free from this outlook and instead see the needs of others both physically and spiritually. A vital means of achieving this shift is through contributing financially to causes that align us to our vision which is to passionately connect people to an authentic life in Christ.

What we all must realize is that our heart’s desire to expand the Kingdom of God is never going away as a church. Our goal will always be to advance Kingdom causes in our region and around the world. Questions arise like, “Where does God desire us to broaden our influence and reach?” and “What are those worthwhile causes He has etched onto our hearts?” In this context, we find our answer in the form of Kingdom Builders—an initiative that stands as a reservoir, connecting ways for us to unite annually as a church around multiple Points of Passion.

Our goal for 2025 is to raise \$1,250,000 above and beyond our regular tithes (10% of our income/increase). In this booklet, you will learn about our Points of Passion: People, Places, and Partnerships. In addition to our current Points of Passion, the Possibilities category removes the vision lid for Reverb Church and looks at what is possible with God’s unlimited resources and our obedience. We believe 2025 will be an incredible year and are very thankful that we have the opportunity to share it with you and your family!





GATHERING

POINT OF PASSION PEOPLE

\$400K

At Reverb Church, we desire to serve our community and our world with the love of Jesus in a tangible way. Outreach events, RTX Internship, YTH student ministry, short-term missions trips and benevolence are just a few of our initiatives.



INCLUDES

CITY SERVE

As part of our outreach strategy, we want to help Widows and Orphans, Military Families, the Homeless, Women with unplanned Pregnancies, and more.



SCHOOLS PROJECT

This year, we're launching new initiatives in our local schools to provide meaningful support to teachers and care for students. These efforts will address the spiritual, physical, and emotional needs of both students and their families. Whether it's through classroom mentoring or providing holiday care packages, your generosity is creating a lasting impact.

SUMMER CAMPS/CONFERENCES

We are committed to ensuring that every child, youth, and leader can experience the life-changing power of camps and conferences, regardless of financial limitations. This commitment is geared toward the cost of attendance but also the essential needs like transportation, food, and accommodation. These efforts ensure that no barrier stands in the way of their encounter with God. Together, we can equip and empower this generation to be strong, passionate leaders for Christ.





TEAM AND LEADER DEVELOPMENT

As we grow as an organization, our teams and leadership must grow as well. Our heart is to continue developing the people of Reverb Church through the best resources and training available in the body of Christ. Our goal is to help fuel those who desire to grow in their gifts and use them for the advancement of the Kingdom of God.

SHORT TERM MISSION TRIPS

We're not just passionate about reaching people in Northeast Florida, but also others around the world! In 2025, we're excited to offer new opportunities for in-person mission trips. This passion point helps cover additional costs for international travel.



LOCAL, NATIONAL & INTERNATIONAL BENEVOLENCE

We recognize that it's impossible to predict every passion or opportunity that may arise throughout the year. Our benevolence efforts are designed to meet the unexpected needs of individuals in our church, our local community, our nation, and across the globe.

RTX

REVERB TRAINING EXPERIENCE

RTX is an 18-week intensive leadership development and ministry training experience at Reverb Church, designed to equip and empower world-class leaders who will help build the local church.

Participants will gain hands-on church staff experience, receive teaching from top leaders around the globe, and graduate with the skills and knowledge needed to excel in any church staff role.

By the end of RTX, we are confident that each graduate will be fully prepared to step into impactful roles within the local church.



POINT OF PASSION PARTNERSHIPS

\$385K

We collaborate with key organizations, churches, and ministries dedicated to sharing the Good News of Jesus and transforming lives around the world. Our partnerships include local and national church planters, global missionaries, Christian humanitarian initiatives, and pregnancy care centers that focus on spreading Jesus' life-changing message. Additionally, we support child sponsorship programs to provide health, education, and nutrition for children across the globe.



INCLUDES

CHURCH PLANTS

Church planting is a large part of our mission. We believe Jesus is the hope of the world and so we must mobilize and support His building of the church. More people are coming to faith in Christ through NEW church plants than any other way in our world today. We want to continue to sponsor the planting of life-giving churches in our city and around the world. Here is a list of where our church planting support is going in 2025:

- **Kindred Church** | St. Augustine, FL.
- **Mission City Church** | St. Augustine, FL.
- **Gather Church** | St. Johns, FL.
- **Axis Church** | St. Augustine, FL.
- **One Heart Church** | Jacksonville, FL.
- **Fearless Church** | Port Charlotte, FL.
- **Together Church** | Jacksonville, FL.
- **Accessible Church** | Québec, Canada
- **ARC Church Planting Organization**
- **Compassion International NEW Church Plant**



LOCAL MISSIONS

- **First Coast Women's Services** | Northeast FL.
- **St. Francis House** | St. Augustine, FL.
- **All Nations Soccer** | Jacksonville, FL.
- **Mission House Jax** | Jacksonville, FL.
- **Collective Churches** | Northeast FL.

NATIONAL MISSIONS

- **Barnabas Network** | Pastor Retreats for Healthy Leaders
- **Prison Ministry**
- **Next Level Relational Network**





GLOBAL MISSIONS

We will continue to sponsor missionaries and churches around the world. Here is a list of where our global mission support is going in 2025:

- Buena Vista Soccer Academy | Honduras, Guatemala, West Africa, Quiche'
- Shepherd's Flock Home of Victors | India
- Ngäbe Indians | Panama
- Funding for Free Bibles | Pakistan
- DOA Tribe | Indonesia
- Propel Ministries | Serbia
- Compassion International | Other
- Convoy of Hope | Gospel-Centered Relief Efforts
- One Hope | God's Word, Every Child
- Overland Missionaries | Amazon



COLLECTIVE CHURCHES

- The Collective exists for ministry leaders to connect, collaborate, and care for one another for the advancement of the Gospel. It's a collective of independent churches from different denominations, networks, and backgrounds centered on Jesus. This makes it possible for churches to come together in unity and providing support and care for pastors.

ALL NATIONS SOCCER

REFUGEE MISSIONS | JACKSONVILLE, FL.

ANS operates year round serving over 2,000 players from over 100 nations playing on over 60 teams. We are blown away by the diversity, need and incredible opportunity we have to serve and build life changing relationships with people from all over the world trying to start a new life here. Over 30% of their players come from the top 50 nations considered most unreached and highly persecuted. ANS will share the good news of Jesus at over 350 games this year and be a bridge to the local church as they serve together.

To **RESTORE** refugees from the devastation and loss they came from and help them thrive in creating a new life and to restore people of all nations in their relationship with God.

To **UNIFY** refugees with people of all nations in our city by using the game of soccer and the model of Jesus to break down racism and forge a healthy community.

To **EMPOWER** refugees and people of all nations with the character and values to thrive by positively impacting our community and helping raise up the next generation.



COMPASSION INTERNATIONAL

NEW CHURCH PLANT

Reverb Church loves church planters. Each year, our goal is to plant one new church with Compassion International in specific regions of the world. In the church planting process, Compassion's national office identifies churches who are ready to multiply. These "mother churches" choose a location for a new plant and select a planter who is visionary, gifted and trained to plant. The mother church provides oversight and encouragement for the planter so the church has every opportunity to thrive and grow.

Compassion's network of churches span 29 developing countries. Each country operates strategically to select and train frontline churches that implement Compassion's child development program. Although the priority of the national office is primarily the success of the child development center, the general health of the church is also monitored. To date, all 260+ church plants are still sharing Christ's love and grace in their neighborhoods and operating as fully developed churches.



ARC CHURCHES

Association of Related Churches is a cooperative of independent churches from different denominations, networks, and backgrounds who strategically resource church planters and pastors to help them reach people with the message of Jesus.

They accomplish this by providing relationships, resources, and opportunities to leaders of new and existing churches so that they can thrive.



ST. FRANCIS HOUSE

ST. AUGUSTINE, FL

St. Francis House is located in Downtown St. Augustine.

Their mission is to assist and engage vulnerable families and single adults without housing in compassion, shelter, and opportunity driven programming to ensure their homelessness is rare, brief, and one time.

Our support directly impacts the lives of homeless youth in our community.



FIRST COAST WOMEN'S SERVICES

JACKSONVILLE, FL

First Coast Women's Services is a pregnancy care center that operates under the guidelines of Care Net International.

FCWS is a Christian based organization that performs free ultrasounds to encourage clients to choose life.

This is just one of many services with which they provide compassionate hope and help to women and men who are facing fear and indecision in a time of real crisis.



MISSION HOUSE JAX

JACKSONVILLE, FL

Mission House is the only day facility dedicated to meeting the needs of people experiencing homelessness at the Beaches through compassion, faith, and programs designed to provide individualized assistance. Its primary goal is to help people affected by homelessness transition off the streets and into productive, self-sufficient lives.

Clients enrolled in the Crisis Care Program have access to meals, showers, clean clothing, and case management. The time spent with case managers is crucial, as it allows the team to understand how each person arrived at their current situation. Every case is as unique as the individual themselves. The face of homelessness has changed dramatically over the years. Due to economic conditions, family background, and life circumstances, each client has faced challenges they may never have anticipated. Mission House is there to assist them in planning a path back to an independent and positive life.



POINT OF PASSION PLACES

\$ 465K





INCLUDES

FUTURE LOCATIONS | \$350K

We are experiencing growth and planting new locations is a natural extension of our mission to Resound the Message, Make Disciples, and Plant Churches.

As we look ahead to further growth in our region, it's crucial that we start planning financially for the next season. Whether it's launching a portable campus or securing a permanent location, the Kingdom Builders fund will provide the resources needed—such as equipment, staffing, and other essentials—to make this new location a reality.



REVERB HQ CONSTRUCTION | \$115K

Estimated Project Completion | Summer '25

As a part of Phase 2 construction at our World Golf Village location, we have 4,600 sq. ft. of shell space we are completing for our Reverb Headquarters. These administrative offices and collaborative spaces will serve us now and in our future expansion.



POINT OF PASSION POSSIBILITIES

The Possibilities category lifts the vision lid for Reverb Church, exploring what can be achieved through God's limitless resources and our obedience. Let's see the impossible accomplished in Jesus' name!

REVERB CHURCH | DEBT-FREE MORTGAGE | \$4.35M

Eliminating debt might not seem visionary, but it unlocks opportunities for future growth and projects.

We understand that reducing debt is crucial for the long-term health of our church. Achieving a debt-free status enables us to allocate more resources toward advancing our mission and serving our community effectively.





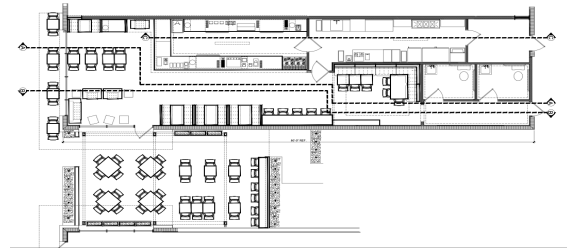
REFUEL

COFFEE CO



DON'T
DREAM
ON EMPTY





INCLUDES

REFUEL COFFEE CO.

A non-profit coffee company that is fueling your future!

The perfect blend of pour-overs and purpose. Our vision is to tap into the \$95.58 billion U.S. coffee industry for Kingdom purposes. REFUEL COFFEE CO exists to make a difference both locally and globally, reshaping the narrative and culture often seen in other coffee companies. We are people-focused, serving as an extension of the work at Reverb Church to passionately connect people to Jesus.

We believe the best companies give back. That's why we've partnered with Compassion International dedicating all of our profits to their causes. Through our local efforts, we will invest in global communities, help release children from poverty in Jesus' name, plant churches, sponsor children, and support local coffee farmers worldwide through fair trade practices.

Get inspired. Make a difference.

St. Johns County Location #1 | \$500K
Estimated Opening Q1 2025

Location #2 with Drive Thru | \$1M
Estimated Project Completion | TBD

Location 3 with Drive Thru | \$1M
Estimated Project Completion | TBD

We are seeking Kingdom Builders who feel called to invest in our next location to make a local and global impact. Our audacious goal is to operate 50 locations by 2040.

HOW TO GET
INVOLVED

PRAY

Ask how God wants you to participate in Kingdom Builders.

SACRIFICE

When we give above and beyond our tithe, we get to see Kingdom causes advance.

GIVE

Every dollar you give goes toward all our points of passion here and around the world.

WAYS TO GIVE

ONLINE

Visit reverb.church/giving, click 'Give Online Today' and then select 'Kingdom Builders' under the fund option

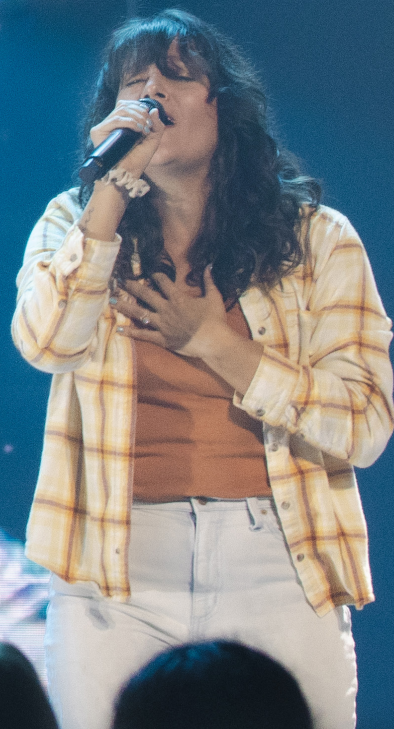
CHECK

Leave a check in the black boxes on Sundays payable to Reverb Church with "Kingdom Builders" in the memo

STOCKS/CRYPTO

Go to reverb.church/giving and select Cryptocurrency or Stocks.







REVERB.CHURCH/KINGDOMBUILDERS